

serie/series

morphis

LED

powered by
Citizen Electronics® LED
Transformer included

example code:

art.	size	LED	colour
177	.095	L24	H ngg

art.
177

designers **Innocenzo Rifino
& Lorenzo Ruggieri**

OHIM:
European Patent No.
001810037-001

Chinese Patent No.
HC-IP Agency Co., LTD
CN - 302520755 S

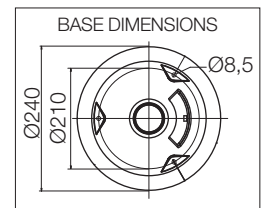
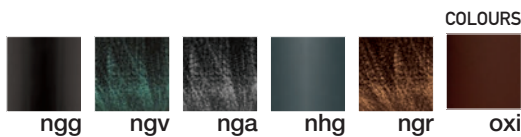
corpo alluminio pressofuso
body in die casting aluminium
corps en aluminium moulé
sous pression
cuerpo aluminio inyectado
Körper aus Aluminium-
Druckguss

diffusore policarbonato
trasparente
diffuser transparent
polycarbonate
diffuseur polycarbonate
transparent
difusor policarbonato
transparente
Diffuser Polykarbonat klar



FOR TECHNICAL DETAILS VISIT
www.landa.it

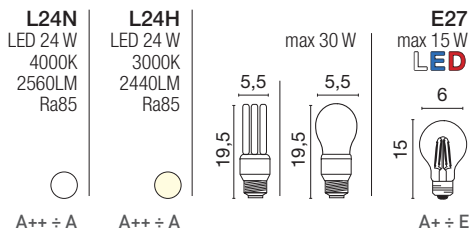
IP65 960°



LED & INSTALLATION

dettagli / details / details
detalles / details:
p.A52-A53

Energy efficiency classes



Included:



code **0404M004**
Single connection IP68

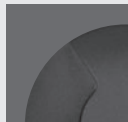
morphis



Projectors



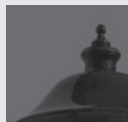
Recessed



NEW
Contemporary



Traditional



CONTEMPORARY



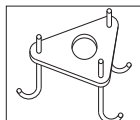
ENERGY SAVING



Accessories on request:



code 0404M003
Loop in loop out IP68



code 00A170.01P
Anchor Bolt

Accessories not available for:
177.33 (E27)
.33H35
.33H70
.33L24N
.33L24H



code 00KR175
Only for: E27

refrattore
refractor
réfracteur
refractor
Refraktor

