

tubo

LED
powered by
Liteon® Optoelectronics

simmetrico
symmetric
symétriques
simétrico
symmetrisch

example code:
| art. | size | LED | ○ |
6011 .1000 L20 N

art.
6011
6012

design Ufficio Tecnico Landa

corpo alluminio estruso
anodizzato e policarbonato
trasparente

body in extruded anodized
aluminium and transparent
polycarbonate

corps en aluminium extrudé
anodisé et polycarbonate
transparent

cuerpo en aluminio
extrusionado y anodizado y
policarbonato transparente

Körper aus eloxiertem
fließgepresst Aluminium und
Polykarbonat klar

diffusore policarbonato
trasparente

diffuser transparent
polycarbonate

diffuseur polycarbonate
transparent

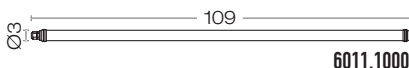
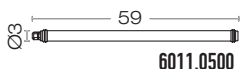
difusor policarbonato
transparente

Diffuser Polykarbonat klar

III 24V d.c.

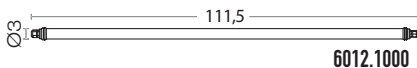
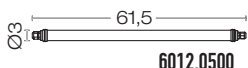
FOR TECHNICAL DETAILS VISIT
www.landa.it

IP67



single connection
2 Mt. cable
-05RN-F
included

art.		°C	W	V	Type	Ⓛ	Ra	
6011.0500L10N	○	150°	25	10	24 d.c.	4000K	1200LM	80
6011.0500L10H	●					3000K	1050LM	80
6011.1000L20N	○	150°	25	20	24 d.c.	4000K	2400LM	80
6011.1000L20H	●					3000K	2100LM	80



loop in loop out connection
2x2 Mt. cable
-05RN-F
included

art.		°C	W	V	Type	Ⓛ	Ra	
6012.0500L10N	○	150°	25	10	24 d.c.	4000K	1200LM	80
6012.0500L10H	●					3000K	1050LM	80
6012.1000L20N	○	150°	25	20	24 d.c.	4000K	2400LM	80
6012.1000L20H	●					3000K	2100LM	80

ELECTRIFICATION

Trasformer available:

cod. 0409BT014 – GE LIGHTING IP67 24V d.c. 12W
cod. 0409BT015 – GE LIGHTING IP67 24V d.c. 25W

Trasformer on request:

cod. 0409BT016 to connect up to 8 pcs/10W - GE Lighting IP67 24V d.c. 100W
cod. 0409BT016 to connect up to 4 pcs/20W - GE Lighting IP67 24V d.c. 100W

Accessories on request:



code 0404M011
Single connection IP68

LED & INSTALLATION

dettagli / details / details
detalles / details:
p.A52-A53

Energy efficiency classes

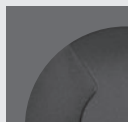
A++ ÷ A

tubo

Projectors



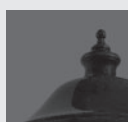
Recessed



NEW
Contemporary



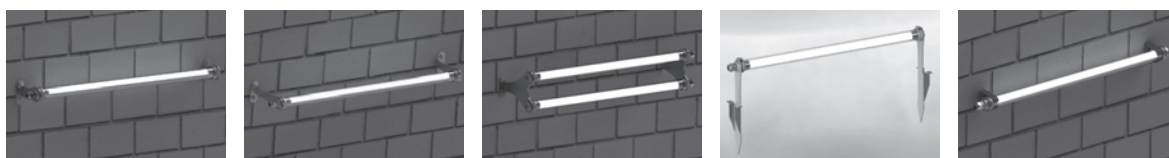
Traditional



CONTEMPORARY



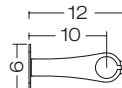
Accessories:



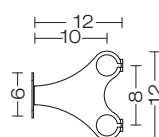
00A6001.01



00A6001.02



00A6001.03



00A6001.04



00A6001.05

